

Transmissive Light

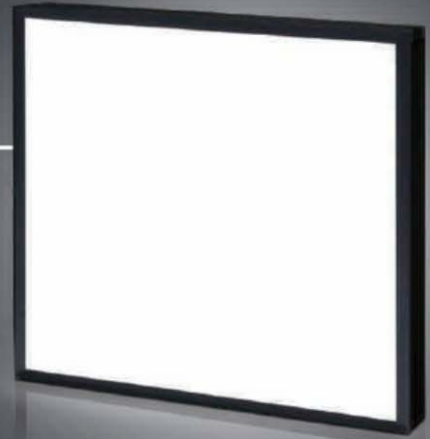
# High-intensity Chip LED Surface Light

## IHM • IHM infrared series

The IHM series is a chip-type transmissive lighting solution that delivers high output at an affordable price in a lightweight package. Extensive lineup of the AW series available with an increase in brightness ranging from 10 to 30%

Extensive lineup of 850-nm infrared series

24 VDC Models Available



Model	Light Color	Power Consumption (W)	Input Voltage (V)	SAG (*)	Drawing
IHM-25/30□	R	2	12	9A	1
	AW			F9	
	B			CA	
	IR(850)			98	
IHM-66/60□	R	7.5	12	E3	2
	AW			F5	
	B			FF	
	IR(850)			B3	
IHM-108/114□	R	14.7	24	FF	3
	AW			FF	
	B			CF	
	IR(850)			D0	
IHM-150/142□	R	24	24	E5	4
	AW			—	
	B			—	
	IR(850)			—	
IHM-214/226□HV	R	47	24	—	5
	AW			—	
	B			—	
	IR(850)			—	

□ represents R (Red), W (White), B (Blue) or IR(Infrared).

\*Optional polarizing plate and light control film can be attached.

For details, see page 78.

\*IHM-214/226□HV has 24 V DC specifications.

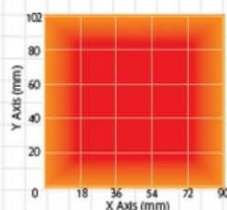
\*The SAG value indicates the maximum voltage setting for SAG power supplies. For details, see page 68.

\*The color temperature of the AW series is lower by approx. 500 K in comparison with the conventional W series. Note, however, that it varies individually depending on the model and size.

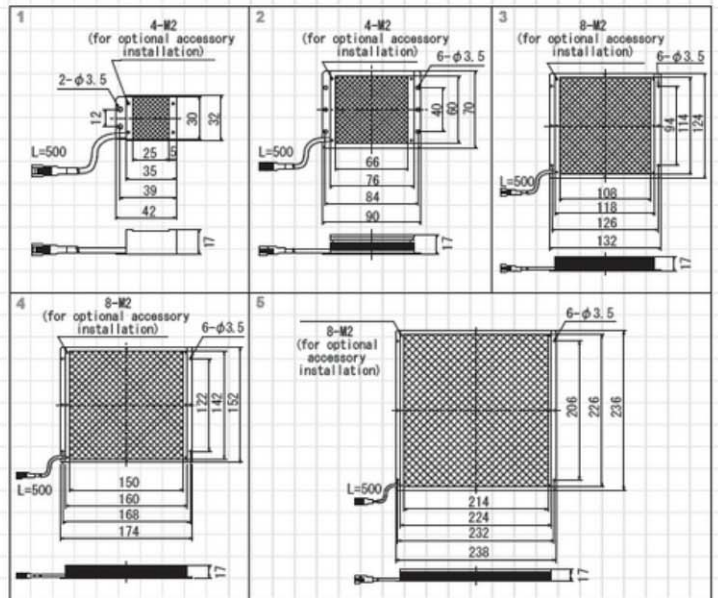
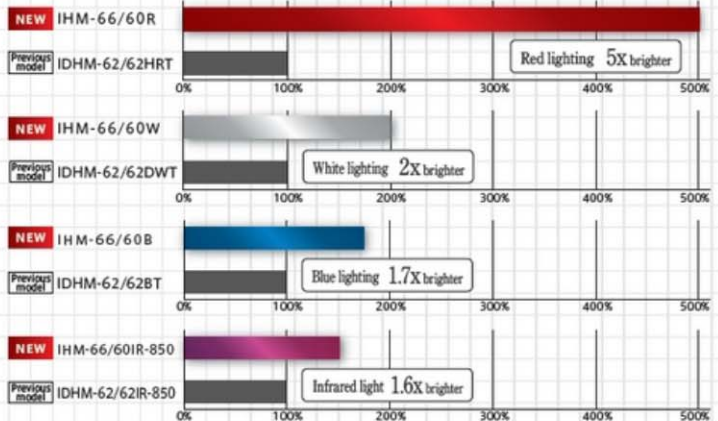
### Luminance Distribution Chart (Reference Values)

Light is highly uniform except around edges.

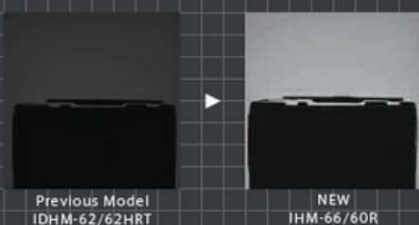
Measurement model: IHM-108/114W



### Drastically Increased Brightness Comparison of colors using IHM-66/60 sizes (reference values)



Effect Comparison using shutter speed of 1/10,000 (100% modulated light)



### LIGHTING STRUCTURE

